

# BOSS<sup>TM</sup>

## LED



LED BULBS • LED COBS • LED FIXTURES • LED MODULES • LED PAR LAMPS • LED RETROFITS • LED TUBES

[www.kls-usa.com](http://www.kls-usa.com)



## **TABLE OF CONTENTS**

<u>LED COMMERCIAL / INDUSTRIAL LED INDOOR / OUTDOOR FIXTURES</u>	<u>03</u>
<u>LED WALL PACK FIXTURES</u>	<u>13</u>
<u>LED CANOPY / GAS STATION LIGHT FIXTURES</u>	<u>16</u>
<u>LED HIGH BAY LAMPS AND FIXTURES</u>	<u>18</u>
<u>LED STREET AND PARKING LIGHT FIXTURES</u>	<u>21</u>
<u>LED COB DOWN LIGHTS</u>	<u>22</u>
<u>LED PANELS / RETROFIT KITS</u>	<u>27</u>
<u>LED TUBES</u>	<u>31</u>
<u>LED GENERAL LIGHTING LAMPS</u>	<u>42</u>
<u>LED LOW POWER COB LAMPS</u>	<u>47</u>
<u>LED HIGH POWER COB LAMPS</u>	<u>49</u>
<u>LED HIGH POWER RETROFIT KITS</u>	<u>54</u>
<u>LED MODULES</u>	<u>55</u>





## LED3X50 FLOOD LIGHT

Applications: General Area Lighting, Building Perimeter Lighting, Security Lighting, Parking Lot Lighting and much more.

<b>SPECIFICATIONS:</b>	<b>LF/FL/LED3X50/CW/UNV</b>
Operating Voltage	120-277V
Power Consumption	150W
Lumens per Watt	109 Lm/W
Lumens	16350 Lm
Color Temperature	6000K
Bulb Type	COB LED
Replaces	HPS/MH 400-1000
Driver	Internal UL Driver
CRI	<80
Optics IP Rating	IP65
Fixture IP Rating	IP65
Power Factor	<0.95
Dimmable	No
Beam Angle	180°
Operating Temperature	-30° / +50°C
Vibration Shock Resistant	Yes
Omni-Directional	N/A
Average Lamp Hours (Hrs)	50,000
Lamp Base	Hard Wire
Construction	Cast Aluminum
Dimensions	20.5" x 9.5" x 4"
Weight	14 Lbs.
Warranty	5 Year Limited

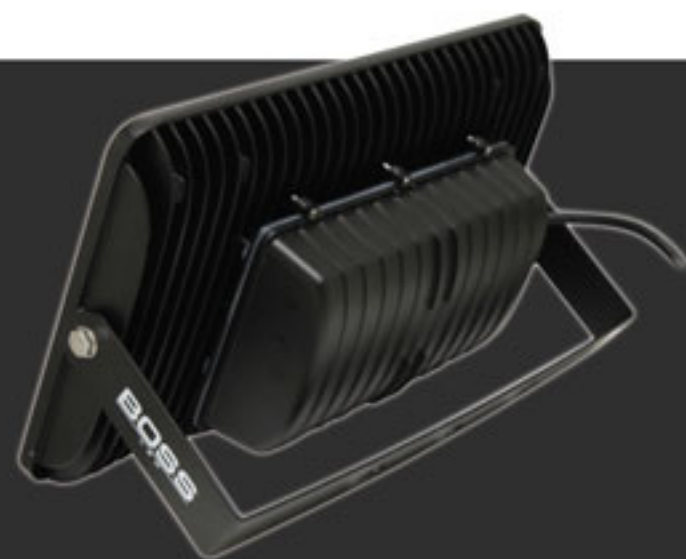


## LED2X50 FLOOD LIGHT

Applications: General Area Lighting, Building Perimeter Lighting, Security Lighting, Wall Packs, Sign and Play Pole Lighting.

### SPECIFICATIONS: LF/FL/LED2X50/CW/UNV

Operating Voltage	120-277V
Power Consumption	100W
Lumens per Watt	103 Lm/W
Lumens	10300 Lm
Color Temperature	6000K
Bulb Type	COB LED
Replaces	HPS/MH 400
Driver	Internal UL Driver
CRI	<80
Optics IP Rating	IP66
Fixture IP Rating	IP65
Power Factor	<0.95
Dimmable	No
Beam Angle	180°
Operating Temperature	-30° / +50°C
Vibration Shock Resistant	Yes
Omni-Directional	N/A
Average Lamp Hours (Hrs)	50,000
Lamp Base	Hard Wire
Construction	Cast Aluminum
Dimensions	15" x 9.5" x 4"
Weight	9 Lbs.
Warranty	5 Year Limited





# LED FLOOD LIGHTS

Applications: General Area Lighting, Wall Packs, Parking Lots, Perimeter Signs, Sign Illumination and Security Lighting.



SPECIFICATIONS:	LF/FL/LED1X30/CW/UNV	LF/FL/LED1X50/CW/UNV	LF/FL/LED1X70/CW/UNV
Operating Voltage	120-277V	120-277V	120-277V
Power Consumption	30W	50W	70W
Lumens per Watt	100 Lm/W	100 Lm/W	100 Lm/W
Lumens	3000 Lm	5000 Lm	7000 Lm
Color Temperature	6000K	6000K	6000K
Bulb Type	COB LED	COB LED	COB LED
Replaces	HPS/MH 75-150	HPS/MH 100-250	HPS/MH 400
Driver	Internal UL Driver	Internal UL Driver	Internal UL Driver
CRI	<80	<80	<80
Optics IP Rating	IP66	IP66	IP65
Fixture IP Rating	IP65	IP66	IP65
Power Factor	<0.95	<0.95	<0.95
Dimmable	No	No	No
Beam Angle	180°	180°	240°
Operating Temperature	-30° / +50°C	-30° / +50°C	-30° / +50°C
Vibration Shock Resistant	Yes	Yes	Yes
Omni-Directional	N/A	N/A	N/A
Average Lamp Hours (Hrs)	50,000	50,000	50,000
Lamp Base	Hard Wire	Hard Wire	Hard Wire
Construction	Cast Aluminum	Cast Aluminum	Cast Aluminum
Dimensions	8" x 6.5" x 4.5"	10" x 8" x 4.75"	11.75" x 8.25" x 4.5"
Weight	3.5 Lbs.	4.25 Lbs.	7.9 Lbs.
Warranty	5 Year Limited	5 Year Limited	5 Year Limited

## OPTIONAL ACCESSORIES



LF/FL/LED1X50/ADAPTOR



MOUNTING BRACKET



## LED1X60 FLOOD LIGHT

Applications: General Area Lighting, Wall Pack, Building Perimeter, Yard Lighting, Street Lighting, Security Lighting, Parking Lots, Service Roads and Alley Ways.

### SPECIFICATIONS: LF/FL/LED1X60/CW/UNV

Operating Voltage	120-277V
Power Consumption	60W
Lumens per Watt	100 Lm/W
Lumens	6000 Lm
Color Temperature	6000K
Bulb Type	COB LED
Replaces	HPS/MH 150-250
Driver	Internal UL Driver
CRI	<80
Optics IP Rating	IP66
Fixture IP Rating	IP65
Power Factor	<0.95
Dimmable	No
Beam Angle	240°
Operating Temperature	-30° / +50°C
Vibration Shock Resistant	Yes
Omni-Directional	N/A
Average Lamp Hours (Hrs)	50,000
Lamp Base	Hard Wire
Construction	Cast Aluminum
Dimensions	13.75" x 11.5" x 4.5"
Weight	6.11 Lbs.
Warranty	5 Year Limited







## LED FLOOD LIGHTS

Applications: General Area Lighting, Building Perimeter Lighting, Security Lighting, Wall Packs and much more.

<b>SPECIFICATIONS:</b>	<b>LF/FL/LED100/CW/UNV</b>	<b>LF/FL/LED150/CW/UNV</b>
Operating Voltage	120-277V	120-277V
Power Consumption	100W	150W
Lumens per Watt	100 Lm/W	100 Lm/W
Lumens	10000 Lm	15000 Lm
Color Temperature	5500-6000K	5500-6000K
Bulb Type	COB LED	COB LED
Replaces	HPS/MH 250-400	HPS/MH 400-1000
Driver	Internal UL Driver	Internal UL Driver
CRI	<80	<80
Optics IP Rating	N/A	N/A
Fixture IP Rating	IP65	IP65
Power Factor	<0.95	<0.95
Dimmable	No	No
Beam Angle	120°	120°
Operating Temperature	-30° / +50°C	-30° / +50°C
Vibration Shock Resistant	Yes	Yes
Omni-Directional	N/A	N/A
Average Lamp Hours (Hrs)	50,000	50,000
Lamp Base	Hard Wire	Hard Wire
Construction	Cast Aluminum	Cast Aluminum
Dimensions	13" x 16" x 5"	13" x 16" x 5"
Weight	14.7 Lbs.	14.7 Lbs.
Warranty	5 Year Limited	5 Year Limited



# LED FLOOD LIGHTS

Applications: General Area Lighting, Wall Pack, Parking Lot, Perimeter Sign, Sign Illumination and Security Lighting.



<b>SPECIFICATIONS:</b>	<b>LF/FL/LED10-1/CW/UNV</b>	<b>LF/FL/LED20/CW/UNV</b>	<b>LF/FL/LED50/CW/UNV</b>
Operating Voltage	120-277V	120-277V	120-277V
Power Consumption	10W	20W	50W
Lumens per Watt	91.8 Lm/W	105 Lm/W	105 Lm/W
Lumens	974 Lm	2196 Lm	5188 Lm
Color Temperature	5500-6000K	5500-6000K	3000K
Bulb Type	COB LED	COB LED	COB LED
Replaces	HPS/MH 50	HPS/MH 50-100	HPS/MH 100-175
Driver	Internal UL Driver	Internal UL Driver	Internal UL Driver
CRI	<75	<75	<75
Optics IP Rating	N/A	N/A	N/A
Fixture IP Rating	IP65	IP65	IP65
Power Factor	<0.95	<0.95	<0.95
Dimmable	No	No	No
Beam Angle	120°	120°	120°
Operating Temperature	-30° / +50°C	-30° / +50°C	-30° / +50°C
Vibration Shock Resistant	Yes	Yes	Yes
Omni-Directional	N/A	N/A	N/A
Average Lamp Hours (Hrs)	50,000	50,000	50,000
Lamp Base	Hard Wire	Hard Wire	Hard Wire
Construction	Cast Aluminum	Cast Aluminum	Cast Aluminum
Dimensions	5.75" x 7.3" x 2.25"	8.80" x 11.25" x 3.25"	11.5" x 13.75" x 4.5"
Weight	2 Lbs.	3 Lbs.	7 Lbs.
Warranty	5 Year Limited	5 Year Limited	5 Year Limited





## LED 10W FLOOD LIGHT

Applications: General Area Lighting, Alley Ways, Tunnels, Walk Ways, Work Lights, Trucks, Trailers and Security Lighting.

<b>SPECIFICATIONS:</b>	<b>LF/FL/LED10-2/CW/UNV</b>	<b>LF/FL/LED10-2/WW/UNV</b>
Operating Voltage	120-277V	120-277V
Power Consumption	10W	10W
Lumens per Watt	81 Lm/W	75 Lm/W
Lumens	810 Lm	750 Lm
Color Temperature	6000K	3000K
Bulb Type	COB LED	COB LED
Replaces	HPS/MH 50	HPS/MH 50
Driver	Internal UL Driver	Internal UL Driver
CRI	<75	<75
Optics IP Rating	N/A	N/A
Fixture IP Rating	IP65	IP65
Power Factor	<0.99	<0.95
Dimmable	No	No
Beam Angle	120°	120°
Operating Temperature	-30° / +50°C	-30° / +50°C
Vibration Shock Resistant	N/A	N/A
Omni-Directional	N/A	N/A
Average Lamp Hours (Hrs)	50,000	50,000
Lamp Base	Hard Wire	Hard Wire
Construction	Cast Aluminum	Cast Aluminum
Dimensions	4.5" x 3.25" x 1.75"	4.5" x 3.25" x 1.75"
Weight	0.812 Lbs.	0.812 Lbs.
Warranty	5 Year Limited	5 Year Limited

## LED 10W MOTION FLOOD LIGHT

Applications: General Area Motion Lighting, Security Lighting, Building Perimeter, Yard Lighting, Parking Lots, Service Roads and Alley Ways.

SPECIFICATIONS:	LF/FL/LED10/MOTION/CW
Operating Voltage	120-277V
Power Consumption	10W
Lumens per Watt	80 Lm/W
Lumens	800 Lm
Color Temperature	6000K
Bulb Type	COB LED
Replaces	HPS/MH 50
Driver	Internal UL Driver
CRI	<75
Optics IP Rating	N/A
Fixture IP Rating	IP65
Power Factor	<0.95
Dimmable	No
Beam Angle	120°
Operating Temperature	-30° / +50°C
Vibration Shock Resistant	N/A
Omni-Directional	N/A
Average Lamp Hours (Hrs)	50,000
Lamp Base	Hard Wire
Construction	Cast Aluminum
Dimensions	4.5" x 8" x 3.5"
Weight	1.5 Lbs.
Warranty	5 Year Limited







## LED FLOOD LIGHT

Applications: Wide range of applications from outdoor building illumination, security lighting, and indoor warehouse.

<b>SPECIFICATIONS:</b>	<b>LF/FL/LED70/6K/CREE</b>	<b>LF/FL/LED125/6K/CREE</b>
Operating Voltage	120-277V	100-277V
Power Consumption	70W	125W
Lumens per Watt	110 Lm/W	95 Lm/W
Lumens	7700 Lm	11875 Lm
Color Temperature	6000K	6000K
Bulb Type	CREE LED	CREE LED
Replaces	HPS/MH 175-250	HPS/MH 250-400
Driver	Internal Driver	Internal Driver
CRI	<80	<80
Optics IP Rating	IP65	IP65
Fixture IP Rating	IP62	IP62
Power Factor	<0.97	<0.97
Dimmable	No	No
Beam Angle	120°	140°
Operating Temperature	-30° / +65°C	-30° / +65°C
Vibration Shock Resistant	N/A	N/A
Omni-Directional	N/A	N/A
Average Lamp Hours (Hrs)	50,000	50,000
Lamp Base	Hard Wire	Hard Wire
Construction	Cast Aluminum	Cast Aluminum
Dimensions	13" x 5.25" x 4"	17" x 5.5" x 4"
Weight	6 Lbs.	7.7 Lbs.
Warranty	5 Year Limited	5 Year Limited

# LED WALL PACK

Applications: General Illumination, Walk Ways, Security, Doorway, Pathway and Perimeter Lighting.

\*Does not include photo cell.



SPECIFICATIONS:	LF/WP/LED10/5K/UNV	LF/WP/LED20/5K/UNV	LF/WP/LED30/5K/UNV
Operating Voltage	120-277V	120-277V	120-277V
Power Consumption	10W	20W	30W
Lumens per Watt	95 Lm/W	95 Lm/W	95 Lm/W
Lumens	950 Lm	1900 Lm	2850 Lm
Color Temperature	5000K	5000K	5000K
Bulb Type	SMD LED	SMD LED	SMD LED
Replaces	HPS/MH 50	HPS/MH 50-75-100	HPS/MH 100-150
Driver	Internal UL Driver	Internal UL Driver	Internal UL Driver
CRI	<75	<75	<75
Optics IP Rating	N/A	N/A	N/A
Fixture IP Rating	IP65	IP65	IP65
Power Factor	<0.95	<0.95	<0.95
Dimmable	No	No	No
Beam Angle	120°	120°	120°
Operating Temperature	-30° / +50°C	-30° / +50°C	-30° / +50°C
Vibration Shock Resistant	N/A	N/A	N/A
Omni-Directional	No	No	No
Average Lamp Hours (Hrs)	50,000	50,000	50,000
Lamp Base	Hard Wire	Hard Wire	Hard Wire
Construction	Molded Plastic	Molded Plastic	Molded Plastic
Dimensions	6.75" x 5.25" x 11"	6.75" x 5.25" x 11"	6.75" x 5.25" x 11"
Weight	2 Lbs.	2.3 Lbs.	2.5 Lbs.
Warranty	5 Year Limited	5 Year Limited	5 Year Limited







## LED WALL PACKS

Applications: General Illumination, Building Illumination and Alley Way Lighting.

LED/WP/LED60/5K/UNV  
LED/WP/LED90/5K/UNV  
Adjustable Tilt



LF/WP/LED70/5K/UL/UNV



SPECIFICATIONS:	LF/WP/LED60/5K/UNV	LF/WP/LED70/5K/UL/UNV	LF/WP/LED90/5K/UNV
Operating Voltage	120-277V	120-277V	120-277V
Power Consumption	60W	70W	90W
Lumens per Watt	82 Lm/W	96 Lm/W	80 Lm/W
Lumens	4920 Lm	6770 Lm	7200 Lm
Color Temperature	5000K	5000K	5000K
Bulb Type	SMD LED	SMD Philips LED	SMD LED
Replaces	HPS/MH 150-250	HPS/MH 250-400	HPS/MH 250-400
Driver	Internal UL Driver	Internal UL Driver	Internal UL Driver
CRI	<75	<75	<75
Optics IP Rating	N/A	N/A	N/A
Fixture IP Rating	IP65	IP65	IP65
Power Factor	<0.95	<0.95	<0.95
Dimmable	No	No	No
Beam Angle	160°	60° by 90°	160°
Operating Temperature	-30° / +50°C	-30° / +50°C	-30° / +50°C
Vibration Shock Resistant	N/A	N/A	N/A
Omni-Directional	No	No	No
Average Lamp Hours (Hrs)	50,000	50,000	50,000
Lamp Base	Hard Wire	Hard Wire	Hard Wire
Construction	Cast Aluminum	Cast Aluminum	Cast Aluminum
Dimensions	12.5" x 9" x 7.5"	12.75" x 8"	17" x 9.5" x 9"
Weight	13 Lbs.	15 Lbs.	15 Lbs.
Warranty	5 Year Limited	5 Year Limited	5 Year Limited



## LED WALL PACKS

Applications: General Illumination, Building Illumination, Alley Way Lighting.

<b>SPECIFICATIONS:</b>	<b>LF/WP/LED22/6K/UNV</b>	<b>LF/WP/LED42/6K/UNV</b>
Operating Voltage	120-277V	120-277V
Power Consumption	22W	42W
Lumens per Watt	90 Lm/W	95 Lm/W
Lumens	1980 Lm	3990 Lm
Color Temperature	5700K	5700K
Bulb Type	SMD LED	SMD LED
Replaces	HPS/MH 50	HPS/MH 150-250
Driver	Internal UL Driver	Internal UL Driver
CRI	<75	<75
Optics IP Rating	N/A	N/A
Fixture IP Rating	IP65	IP65
Power Factor	<0.95	<0.95
Dimmable	No	No
Beam Angle	140°	140°
Operating Temperature	-30° / +50°C	-30° / +50°C
Vibration Shock Resistant	N/A	N/A
Omni-Directional	No	No
Average Lamp Hours (Hrs)	50,000	50,000
Lamp Base	Hard Wire	Hard Wire
Construction	Cast Aluminum	Cast Aluminum
Dimensions	8" x 5" x 4.75"	10" x 5.5" x 6.5"
Weight	3 Lbs.	5 Lbs.
Warranty	5 Year Limited	5 Year Limited





# LED CANOPY LIGHT

Applications: Walk Way, Parking Garage, Storage Rooms, General Illumination and other Soffits.



<b>SPECIFICATIONS:</b>	<b>LF/CANOPY/LED40/5K/UNV</b>	<b>LF/CANOPY/LED60/5K/UNV</b>
Operating Voltage	100-277V	100-277V
Power Consumption	40W	60W
Lumens per Watt	90 Lm/W	85 Lm/W
Lumens	3500 Lm	5000 Lm
Color Temperature	5000K	5000K
Bulb Type	SMD LED	SMD LED
Replaces	HPS/MH 150-250	HPS/MH 250-400
Driver	UL Driver	UL Driver
CRI	<80	<80
Optics IP Rating	N/A	N/A
Fixture IP Rating	IP54	IP54
Power Factor	<0.95	<0.95
Dimmable	No	No
Beam Angle	90°	90°
Operating Temperature	-70° / -40°C	-70° / -40°C
Vibration Shock Resistant	N/A	N/A
Omni-Directional	No	No
Average Lamp Hours (Hrs)	50,000	50,000
Lamp Base	Hard Wire	Hard Wire
Construction	Cast Aluminum/Plastic	Cast Aluminum/Plastic
Dimensions	12.25" x 12.25" x 9.75"	12.25" x 12.25" x 9.75"
Weight	11.5 Lbs.	11.5 Lbs.
Warranty	5 Year Limited	5 Year Limited



# LED GAS STATION / CANOPY

Applications: Gas Stations, Canopy Lighting and General Illumination.



SPECIFICATIONS:	LF/CANOPY/LED85/6K/UNV	LF/CANOPY/LED120/6K/UNV
Operating Voltage	120-277V	120-277V
Power Consumption	85W	120W
Lumens per Watt	93 Lm/W	111 Lm/W
Lumens	7905 Lm	13360 Lm
Color Temperature	5700K	5700K
Bulb Type	SMD LED	SMD LED
Replaces	HPS/MH 250-400	HPS/MH 400
Driver	Internal UL Driver	Internal UL Driver
CRI	<75	<75
Optics IP Rating	N/A	N/A
Fixture IP Rating	IP65	IP65
Power Factor	<0.95	<0.95
Dimmable	No	No
Beam Angle	115°	115°
Operating Temperature	-30° / +50°C	-30° / +50°C
Vibration Shock Resistant	N/A	N/A
Omni-Directional	No	No
Average Lamp Hours (Hrs)	50,000	50,000
Lamp Base	Hard Wire	Hard Wire
Construction	Cast Aluminum	Cast Aluminum
Dimensions	13.5" x 13.5" x 4.5"	13.5" x 13.5" x 4.5"
Weight	12 Lbs.	12 Lbs.
Warranty	5 Year Limited	5 Year Limited







# LED HIGH BAY DECO

Applications: Ideal for Warehouses, Mega Stores, Gymnasiums, Barn Lighting and many more.

AVAILABLE COLORS:



SPECIFICATIONS:	LED30HB/E39/DECO/UNV	LED60HB/E39/DECO/UNV	LED100HB/E39/DECO/UNV
Operating Voltage	120-277V	120-277V	120-277V
Power Consumption	30W	60W	100W
Lumens per Watt	110 Lm/W	110 Lm/W	110 Lm/W
Lumens	3300 Lm	6600 Lm	11000 Lm
Color Temperature	5500K	5500K	5500K
Bulb Type	SMD LED	SMD LED	SMD LED
Replaces	MH 100-150 High Bay	MH 150-250 High Bay	MH 250-400
Driver	Internal UL Driver	Internal UL Driver	Internal UL Driver
CRI	<75	<75	<75
Optics IP Rating	N/A	N/A	N/A
Fixture IP Rating	IP54	IP54	IP54
Power Factor	<0.95	<0.95	<0.95
Dimmable	No	No	No
Beam Angle	60°	60°	60°
Operating Temperature	-30° / +50°C	-30° / +50°C	-30° / +50°C
Vibration Shock Resistant	N/A	N/A	N/A
Omni-Directional	No	No	No
Average Lamp Hours (Hrs)	50,000	50,000	50,000
Lamp Base	E39	E39	E39
Construction	Aluminum	Aluminum	Aluminum
Dimensions	13.75" x 12.25"	13.75" x 12.25"	11" x 13"
Weight	1 Lb.	2 Lbs.	2 Lbs.
Warranty	5 Year Limited	5 Year Limited	5 Year Limited





# LED HIGH BAY

Applications: Ideal for Warehouses, Mega stores, Grocery stores, Shopping malls, Gymnasiums, Barn Lighting and many more.

<b>SPECIFICATIONS:</b>	<b>LF/HB/LED100/CW/UNV</b>	<b>LF/HB/LED150/CW/UNV</b>
Operating Voltage	120-277V	120-277V
Power Consumption	100W	150W
Lumens per Watt	100 Lm/W	100 Lm/W
Lumens	10000 Lm	15000 Lm
Color Temperature	6000K	6000K
Bulb Type	COB LED	COB LED
Replaces	HPS/MH 250	HPS/MH 400
Driver	Internal UL Driver	Internal UL Driver
CRI	<75	<75
Optics IP Rating	N/A	IP65
Fixture IP Rating	IP65	IP65
Power Factor	<0.95	<0.95
Dimmable	No	No
Beam Angle	120°	120°
Operating Temperature	-30° / +50°C	-30° / +50°C
Vibration Shock Resistant	N/A	N/A
Omni-Directional	N/A	N/A
Average Lamp Hours (Hrs)	50,000	50,000
Lamp Base	Hard Wire	Hard Wire
Construction	Cast Aluminum	Cast Aluminum
Dimensions	19" x 10" x 20"	19" x 10" x 20"
Weight	14 Lbs.	14 Lbs.
Warranty	5 Year Limited	5 Year Limited







LED/HB60/E39/5K/UNV  
LED/HB50/E39/5K/UNV  
LED/HB30/E26/5K/UNV



## LED HIGH BAYS

Applications: Ideal for Warehouses, Mega stores, Grocery Stores, Shopping Malls, Gymnasiums, Barn Lighting and many more.



SPECIFICATIONS:	LED/HB30/E26/5K/UNV	LED/HB50/E39/5K/UNV	LED/HB60/E39/5K/UNV	LED150HB/E39/CW/UNV
Operating Voltage	120-277V	120-277V	120-277V	120-277V
Power Consumption	27.67W	51.8W	60W	150W
Lumens per Watt	72.6 Lm/W	77 Lm/W	90 Lm/W	95 Lm/W
Lumens	2009 Lm	4008 Lm	5400 Lm	14250 Lm
Color Temperature	5000K	5000K	2700-6000K	5500-6000K
Bulb Type	LED	LED	LED	SMD LED
Replaces	HPS/MH 75-150	HPS/MH 150-175	HPS/MH 175-250	HPS/MH 250-400
Driver	Isolated Constant Current	Isolated Constant Current	Isolated Constant Current	Internal UL Driver
CRI	<80	<80	<80	<75
Optics IP Rating	IP20	IP20	IP20	N/A
Fixture IP Rating	IP20	IP20	IP20	IP44
Power Factor	<0	<0	<0.9	<0.95
Dimmable	No	No	No	No
Beam Angle	60°	60°	60°, 90°, 120°	120°
Operating Temperature	-25° / +45°C	-25° / +45°C	-25° / +45°C	-30° / +50°C
Vibration Shock Resistant	Yes	Yes	N/A	N/A
Omni-Directional	No	No	N/A	N/A
Average Lamp Hours (Hrs)	50,000	50,000	50,000	50,000
Lamp Base	E26	E39	E26/E27/E39/E40	E39
Construction	Aluminum	Aluminum	Aluminum	Aluminum
Dimensions	7" x 4"	7" x 4"	7" x 4"	11.5" x 13"
Weight	1.53 Lbs.	1.53 Lbs.	1.53 Lbs.	18 Lbs.
Warranty	5 Year Limited	5 Year Limited	5 Year Limited	5 Year Limited

## LED150 HIGH BAY



LED150HB/E39/CW/UNV



# LED STREET & PARKING LOT LIGHTS

Applications: Ideal for Streets, Highways, Parking lots, Stadiums and much more.



SPECIFICATIONS:	LF/PL/LED60/6K/UNV	LF/PL/LED100/6K/UNV	LF/PL/LED180/6K/UNV
Operating Voltage	120-277V	120-277V	120-277V
Power Consumption	60W	100W	180W
Lumens per Watt	110 Lm/W	110 Lm/W	100 Lm/W
Lumens	6600 Lm	11000 Lm	19800 Lm
Color Temperature	6000K	6000K	6000K
Bulb Type	COB LED	COB LED	COB LED
Replaces	HPS/MH 150	HPS/MH 250-400	HPS/MH 400-1000
Driver	Internal UL Driver	Internal UL Driver	Internal UL Driver
CRI	<80	<80	<80
Optics IP Rating	IP65	IP65	IP65
Fixture IP Rating	IP65	IP65	IP65
Power Factor	<0.97	<0.97	<0.96
Dimmable	No	No	No
Beam Angle	120°	120°	120°
Operating Temperature	-30° / +50°C	-30° / +50°C	-30° / +50°C
Vibration Shock Resistant	N/A	N/A	N/A
Omni-Directional	No	No	No
Average Lamp Hours (Hrs)	50,000	50,000	50,000
Lamp Base	Hard Wire	Hard Wire	Hard Wire
Construction	Cast Aluminum	Cast Aluminum	Cast Aluminum
Dimensions	10" x 23"	11" x 28"	13" x 34.5"
Weight	7 Lbs.	11 Lbs.	13 Lbs.
Warranty	5 Year Limited	5 Year Limited	5 Year Limited





Color Temperature  
available in:  
**3000K or 4000K**

#### Dimensions:

- LF/DL/LED12RD/SMD/3K: 6.75" x 6.75" x 1.5" WEIGHT: 0.87 Lbs.
- LF/DL/LED12RD/SMD/4K: 6.75" x 6.75" x 1.5" WEIGHT: 0.87 Lbs.
- LF/DL/LED18RD/SMD/3K: 8.50" x 8.50" x 1.5" WEIGHT: 1.0 Lbs.
- LF/DL/LED18RD/SMD/4K: 8.50" x 8.50" x 1.5" WEIGHT: 1.0 Lbs.
- LF/DL/LED12SQ/SMD/3K: 6.75" x 6.75" x 1.5" WEIGHT: 1.0 Lbs.
- LF/DL/LED12SQ/SMD/4K: 6.75" x 6.75" x 1.5" WEIGHT: 1.0 Lbs.
- LF/DL/LED18SQ/SMD/3K: 8.60" x 8.60" x 1.5" WEIGHT: 1.5 Lbs.
- LF/DL/LED18SQ/SMD/4K: 8.60" x 8.60" x 1.5" WEIGHT: 1.5 Lbs.

## SURFACE MOUNT LED DOWN LIGHTS

Round and Square surface mounted ceiling LED fixtures, more than three times energy saving compared to traditional light bulb. Applications: Ideal for indoor, commercial or residential applications, hallways, stairwells, car ports, garage, kitchens and general lighting.



#### SPECIFICATIONS:

	LF/DL/LED12RD LF/DL/LED12SQ	LF/DL/LED18RD LF/DL/LED18SQ
Operating Voltage	85-265V	85-265V
Power Consumption	12W	18W
Lumens per Watt	85 Lm/W	85 Lm/W
Lumens	1020 Lm	1530 Lm
Color Temperature	Available in 3000K-4000K	Available in 3000K-4000K
Bulb Type	LED	LED
Replaces	Ceiling Lights	Ceiling Lights
Driver	Attached Driver	Attached Driver
CRI	<80	<80
Optics IP Rating	IP33	IP33
Fixture IP Rating	IP33	IP33
Power Factor	<0.92	<0.92
Dimmable	No	No
Beam Angle	120°	120°
Operating Temperature	-25° / +40°C	-25° / +40°C
Vibration Shock Resistant	Yes	Yes
Omni-Directional	No	No
Average Lamp Hours (Hrs)	30,000	30,000
Lamp Base	E26 or AC wires	E26 or AC wires
Construction	Aluminum	Aluminum
Warranty	3 Years	3 Years

# LED COB DOWN LIGHTS

Applications: Ideal for indoor, commercial or residential applications, hallways, stairwells, kitchens, general lighting, 30° beam angle.  
Great replacement for the regular recess lights.  
3.75" Installation hole.



SPECIFICATIONS:	LF/DL/LED10COB/3K/DM	LF/DL/LED10COB/4K/DM	LF/DL/LED15COB/3K/DM	LF/DL/LED15COB/4K/DM
Operating Voltage	120-277V	120-277V	120-277V	120-277V
Power Consumption	10W	10W	15W	15W
Lumens per Watt	95 Lm/W	100 Lm/W	90 Lm/W	95 Lm/W
Lumens	950 Lm	1000 Lm	1350 Lm	1425 Lm
Color Temperature	2700-3200K	4000-4500K	2700-3500K	3800-4200K
Bulb Type	COB LED	COB LED	COB LED	COB LED
Replaces	CFL and Incandescent	CFL and Incandescent	CFL and Incandescent	CFL and Incandescent
Driver	Internal UL Driver	Internal UL Driver	Internal UL Driver	Internal UL Driver
CRI	<80	<80	<80	<80
Optics IP Rating	N/A	N/A	N/A	N/A
Fixture IP Rating	IP44	IP44	IP44	IP44
Power Factor	<0.96	<0.96	<0.96	<0.96
Dimmable	Yes	Yes	Yes	Yes
Beam Angle	30°	30°	30°	30°
Operating Temperature	-30° / +50°C	-30° / +50°C	-30° / +50°C	-30° / +50°C
Vibration Shock Resistant	N/A	N/A	N/A	N/A
Omni-Directional	No	No	No	No
Average Lamp Hours (Hrs)	50,000	50,000	50,000	50,000
Lamp Base	Hard Wire	Hard Wire	Hard Wire	Hard Wire
Construction	Aluminum	Aluminum	Aluminum	Aluminum
Dimensions	3.75" x 5" x 4"	3.75" x 5" x 4"	3.75" x 5" x 4"	3.75" x 5" x 4"
Weight	1.2 Lbs.	1.2 Lbs.	1.0 Lbs.	1.5 Lbs.
Warranty	5 Year Limited	5 Year Limited	5 Year Limited	5 Year Limited





# LED COB DOWN LIGHT

Applications: Ideal for indoor, commercial or residential applications, hallways, stairwells, kitchens, general lighting, 60° beam angle.  
Great replacement for the regular recess lights. 8" Installation hole.



For Model: LF/DL/LED25COB/3K/DM



SPECIFICATIONS:	LF/DL/LED25COB/3K/UNV	LF/DL/LED25COB/3K/DM	LF/DL/LED35COB/3K/UNV
Operating Voltage	120-277V	120-277V	120-277V
Power Consumption	25W	25W	35W
Lumens per Watt	90 Lm/W	90 Lm/W	90 Lm/W
Lumens	2250 Lm	2250 Lm	3150 Lm
Color Temperature	2700-3500K	2700-3500K	2700-3500K
Bulb Type	COB LED	COB LED	COB LED
Replaces	CFL and Incandescent	CFL and Incandescent	CFL and Incandescent
Driver	Internal UL Driver	Internal UL Driver	Internal UL Driver
CRI	<80	<80	<80
Optics IP Rating	N/A	N/A	N/A
Fixture IP Rating	IP44	IP44	IP44
Power Factor	<0.96	<0.95	<0.96
Dimmable	No	Yes	No
Beam Angle	60°	60°	60°
Operating Temperature	-30° / +50°C	-30° / +50°C	-30° / +50°C
Vibration Shock Resistant	N/A	N/A	N/A
Omni-Directional	No	No	No
Average Lamp Hours (Hrs)	50,000	50,000	50,000
Lamp Base	Hard Wire	Hard Wire	Hard Wire
Construction	Aluminum	Aluminum	Aluminum
Dimensions	5.25" x 9.5" x 7.5"	5.25" x 9.5" x 7.5"	5.25" x 9.5" x 7.5"
Weight	2.12 Lbs.	2.12 Lbs.	2.12 Lbs.
Warranty	5 Year Limited	5 Year Limited	5 Year Limited



## LED15SMD RETROFIT DOWN LIGHT

Applications: Ideal for indoor, commercial or residential applications, hallways, stairwells, kitchens, general lighting. Great replacement for the regular recess lights. Fits 5" and 6" Pot Light Can.

<b>SPECIFICATIONS:</b>	<b>LF/DL/LED15SMD/RTR/DM</b>
Operating Voltage	120V
Power Consumption	15W
Lumens per Watt	85 Lm/W
Lumens	1275 Lm
Color Temperature	2700-3500K
Bulb Type	SMD LED
Replaces	CFL and Incandescent
Driver	Internal UL Driver
CRI	<80
Optics IP Rating	N/A
Fixture IP Rating	IP44
Power Factor	<0.96
Dimmable	Yes
Beam Angle	140°
Operating Temperature	-30° / +50°C
Vibration Shock Resistant	N/A
Omni-Directional	N/A
Average Lamp Hours (Hrs)	50,000
Lamp Base	E2G
Construction	Aluminum
Dimensions	7.25" x 2.5" x 5.5"
Weight	0.875 Lbs.
Warranty	5 Year Limited





## LED SMD DOWN LIGHTS

Applications: Ideal for indoor, commercial or residential applications, hallways, stairwells, kitchens, general lighting. Great replacement for the regular recess lights. 4.25", 7" and 8" Installation hole.



SPECIFICATIONS:	LF/DL/LED8SMD/3K/UNV	LF/DL/LED12SMD/3K/UNV	LF/DL/LED15SMD/3K/UNV	LF/DL/LED20SMD/3K/7"	LF/DL/LED20SMD/3K/8"
Operating Voltage	120-277V	120-277V	120-277V	120-277V	120-277V
Power Consumption	8W	12W	15W	20W	20W
Lumens per Watt	85 Lm/W	85 Lm/W	85 Lm/W	85 Lm/W	85 Lm/W
Lumens	680 Lm	1020 Lm	1275 Lm	1700 Lm	1700 Lm
Color Temperature	2700-3500K	2700-3500K	2700-3500K	2700-3500K	2700-3500K
Bulb Type	SMD LED	SMD LED	SMD LED	SMD LED	SMD LED
Replaces	CFL and Incandescent	CFL and Incandescent	CFL and Incandescent	CFL and Incandescent	CFL and Incandescent
Driver	Internal UL Driver	Internal UL Driver	Internal UL Driver	Internal UL Driver	Internal UL Driver
CRI	<80	<80	<80	<80	<80
Optics IP Rating	N/A	N/A	N/A	N/A	N/A
Fixture IP Rating	IP44	IP44	IP44	IP44	IP44
Power Factor	<0.96	<0.96	<0.96	<0.96	<0.96
Dimmable	No	No	No	No	No
Beam Angle	140°	140°	140°	140°	140°
Operating Temperature	-30° / +50°C	-30° / +50°C	-30° / +50°C	-30° / +50°C	-30° / +50°C
Vibration Shock Resistant	N/A	N/A	N/A	N/A	N/A
Omni-Directional	N/A	N/A	N/A	N/A	N/A
Average Lamp Hours (Hrs)	50,000	50,000	50,000	50,000	50,000
Lamp Base	Hard Wire	Hard Wire	Hard Wire	Hard Wire	Hard Wire
Construction	Aluminum	Aluminum	Aluminum	Aluminum	Aluminum
Dimensions	3.25" x 6" x 4.5"	3.25" x 7.5" x 5.5"	3.25" x 7.5" x 5.5"	3.25" x 8.5" x 6.5"	3.25" x 8.5" x 6.5"
Weight	1.2 Lbs.	1.6 Lbs.	1.6 Lbs.	2.6 Lbs.	2.6 Lbs.
Warranty	5 Year Limited	5 Year Limited	5 Year Limited	5 Year Limited	5 Year Limited

## LED48 2X2 PANEL

Applications: Drop ceiling LED fixtures to be used in new construction or direct replacement for 2 x 2 Fluorescent Troffers. Aluminum frame with hanging hooks and extended cables from the driver. Drop ceiling installation.

<b>SPECIFICATIONS:</b>	<b>LF/LED/PNL2X2/AL48/UNV</b>
Operating Voltage	120-277V
Power Consumption	48W
Lumens per Watt	83 Lm/W
Lumens	3600-4000 Lm
Color Temperature	5500K
Bulb Type	SMD LED
Replaces	2 x 2 Troffer
Driver	UL Driver
CRI	<80
Optics IP Rating	N/A
Fixture IP Rating	IP20
Power Factor	<0.96
Dimmable	No
Beam Angle	N/A
Operating Temperature	-30° / +50°C
Vibration Shock Resistant	N/A
Omni-Directional	N/A
Average Lamp Hours (Hrs)	50,000
Lamp Base	Hard Wire
Construction	Aluminum
Dimensions	24" x 24" x 1.80"
Weight	5 Lbs.
Warranty	5 Years Limited

HOOKS FOR CABLES



UL DRIVER

Universal Voltage  
120-277V

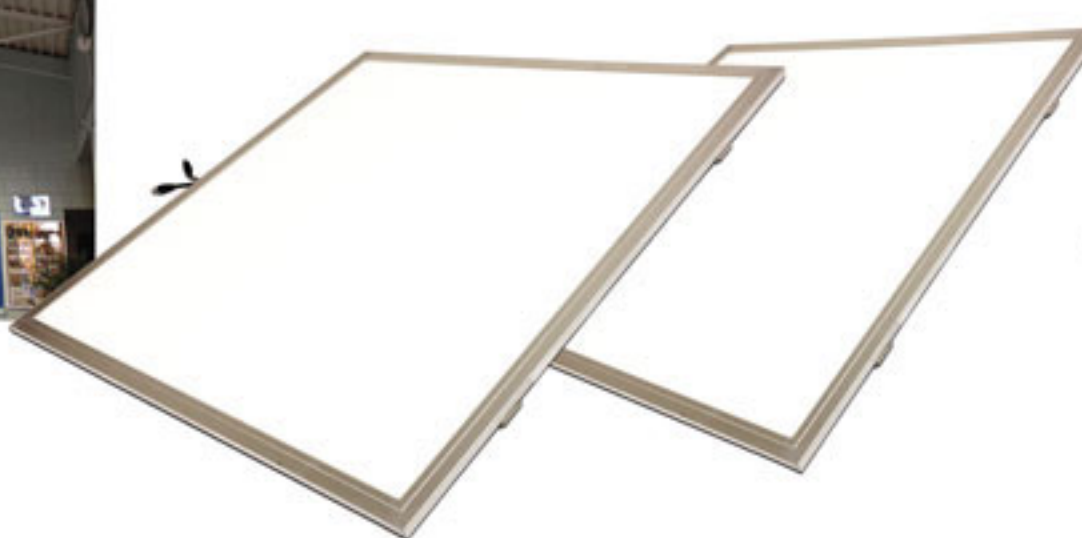
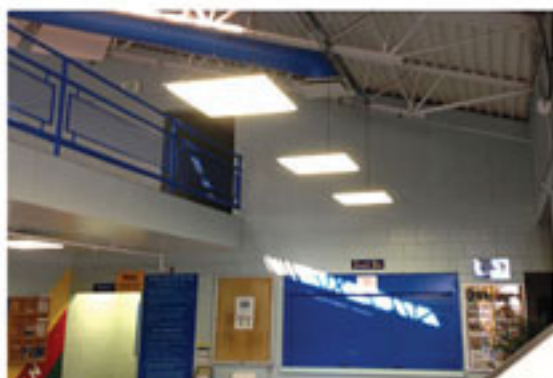






## LED PANELS

Applications: Drop ceiling LED fixtures to be used in new construction or direct replacement for 2x2 Fluorescent Troffers. Aluminum frame.



SPECIFICATIONS:	LF/LED/PNL2X2/AL36/UNV	LF/LED/PNL2X2/AL72/UNV	LED/PANEL2X4/60W/UNV	LED/PANEL2X4/72W/UNV
Operating Voltage	120-277V	120-277V	120-277V	120-277V
Power Consumption	36W	72W	60W	72W
Lumens per Watt	100 Lm/W	105Lm/W	100Lm/W	90Lm/W
Lumens	3600 Lm	7530 Lm	6000 Lm	6500 Lm
Color Temperature	5500K	5000K	4000-5000K	2700-7000K
Bulb Type	SMD LED	SMD LED	SMD 2835 LED	SMD 2835 LED
Replaces	2 x 2 Troffer	2 x 2 Troffer	2 x 4 Troffer	2 x 4 Troffer
Driver	UL Driver	UL Driver	UL Driver	Domestic Driver
CRI	<80	<80	<90	<80
Optics IP Rating	N/A	N/A	IP33	IP41
Fixture IP Rating	IP20	IP20	IP33	IP41
Power Factor	<0.96	<0.96	<0.95	<0.90
Dimmable	No	No	0-10V dimmer available	YES
Beam Angle	N/A	N/A	120°	120°
Operating Temperature	-30° / +50°C	-30° / +50°C	-20° / +50°C	-20° / +45°C
Vibration Shock Resistant	N/A	N/A	N/A	N/A
Omni-Directional	N/A	N/A	N/A	N/A
Average Lamp Hours (Hrs)	50,000	50,000	50,000	50,000
Lamp Base	Hard Wire	Hard Wire	N/A	N/A
Construction	Aluminum/Plastic	Aluminum/Plastic	Aluminum/Plastic	Aluminum/Plastic
Dimensions	24" x 24" x 7/16"	24" x 24" x 7/16"	23.7" x 47.6" x 1.8"	23.7" x 47.7" x 2.28"
Weight	7.5 Lbs.	7.5 Lbs.	11 Lbs.	19.8 Lbs.
Warranty	5 Year Limited	5 Year Limited	5 Year Limited	5 Year Limited

# LED PANEL 2X2 DROP IN

32W, 42W and 48W LED Panel, replacement fixture, drop ceiling application, includes UL approved driver, 120-277V.

Applications: General Area Lighting, Wall Pack, Parking Lot, Perimeter Sign, Sign Illumination and Security Lighting.

EASY LOCKING CONNECTOR



Universal Voltage  
120-277V



SPECIFICATIONS:	LF/LED/PNL2X2/PL32/UNV	LF/LED/PNL2X2/PL42/UNV	LF/LED/PNL2X2/PL48/UNV
Operating Voltage	120-277V	120-277V	120-277V
Power Consumption	32W	42W	48W
Lumens per Watt	92 Lm/W	83 Lm/W	92 Lm/W
Lumens	2944 Lm	3486 Lm	4400 Lm
Color Temperature	5500K	4000K	5500K
Bulb Type	SMD LED	SMD LED	SMD LED
Replaces	2 x 2 Troffer	2 x 2 Troffer	2 x 2 Troffer
Driver	UL Driver	UL Driver	UL Driver
CRI	<85	<80	<85
Optics IP Rating	N/A	N/A	N/A
Fixture IP Rating	IP20	IP20	IP20
Power Factor	<0.93	<0.93	<0.96
Dimmable	No	No	No
Beam Angle	N/A	N/A	N/A
Operating Temperature	-20° / +40°C	-20° / +40°C	-30° / +50°C
Vibration Shock Resistant	N/A	N/A	N/A
Omni-Directional	N/A	N/A	N/A
Average Lamp Hours (Hrs)	30,000	30,000	50,000
Lamp Base	Hard Wire	Hard Wire	Hard Wire
Construction	Plastic	Plastic	Plastic
Dimensions	24" x 24" x 2"	24" x 24" x 2"	24" x 24" x 2"
Weight	5 Lbs.	4.5 Lbs.	5 Lbs.
Warranty	5 Year Limited	5 Year Limited	5 Year Limited





## LED45 TROFFER RETRO KIT

2 x 2 Troffer Retrofit LED panel fixture for drop ceiling application.

### SPECIFICATIONS:

### LF/LED50/PNL/RETRO KIT

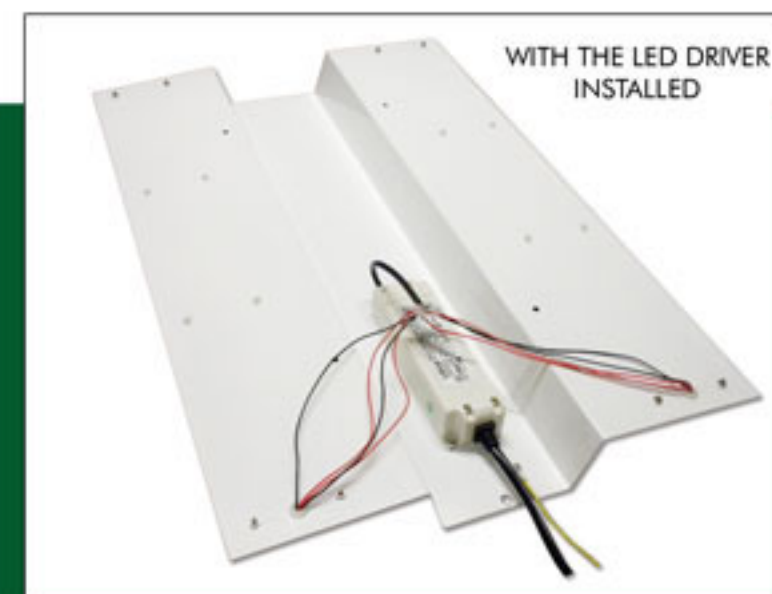
Operating Voltage	120-277V
Power Consumption	45W
Lumens per Watt	110 Lm/W
Lumens	4950 Lm
Color Temperature	5000K
Bulb Type	SMD LED
Replaces	2 x 2 Troffer
Driver	UL Driver
CRI	<80
Optics IP Rating	N/A
Fixture IP Rating	IP20
Power Factor	<0.96
Dimmable	No
Beam Angle	N/A
Operating Temperature	-30° / +50°C
Vibration Shock Resistant	N/A
Omni-Directional	N/A
Average Lamp Hours (Hrs)	50,000
Lamp Base	Hard Wire
Construction	Sheet Metal
Dimensions	2" x 2" x 3.5"
Weight	3 Lbs.
Warranty	5 Year Limited



CROSS SECTION  
VIEW OF THE  
TROFFER RETROFIT  
KIT LIGHTED  
INSIDE THE  
FIXTURE.



WITH THE LED DRIVER  
INSTALLED





## LED T8 4 FT. TUBES

LED replacement lamp for 4 Ft. T8/T12 Florescent tubes.  
Removable internal driver.

WITH REMOVABLE  
INTERNAL DRIVER



SPECIFICATIONS:	LED/T8/18W/4'/35K	LED/T8/18W/4'/41K	LED/T8/18W/4'/5K
Operating Voltage	120-277V	120-277V	120-277V
Power Consumption	18W	18W	18W
Lumens per Watt	105 Lm/W	110 Lm/W	115 Lm/W
Lumens	1900 Lm	1800 Lm	1890 Lm
Color Temperature	3500K	4100K	5000K
Bulb Type	LED Tube	LED Tube	LED Tube
Replaces	T8/T12 4' Tubes	T8/T12 4' Tubes	T8/T12 4' Tubes
Driver	Internal Removable Driver	Internal Removable Driver	Internal Removable Driver
CRI	<85	<85	<85
Optics IP Rating	N/A	N/A	N/A
Fixture IP Rating	IP20	IP20	IP20
Power Factor	<0.97	<0.97	<0.97
Dimmable	No	No	No
Beam Angle	180°	180°	180°
Operating Temperature	-20° / +40°C	-20° / +40°C	-20° / +40°C
Vibration Shock Resistant	N/A	N/A	N/A
Omni-Directional	Yes	N/A	N/A
Average Lamp Hours (Hrs)	50,000	50,000	50,000
Lamp Base	Bi-Pin	Bi-Pin	Bi-Pin
Construction	Plastic	Plastic	Plastic
Dimensions	47.75" x 1.25"	47.75" x 1.25"	47.75" x 1.25"
Weight	0.75 Lbs.	0.75 Lbs.	0.75 Lbs.
Warranty	5 Year Limited	5 Year Limited	5 Year Limited





## LED T8 4 FT. TUBES

Applications: LED replacement lamp for 4 Ft. T8/T12 Florescent tubes.

SPECIFICATIONS:	LED/T8/24W/4'/5K	LED/T8/24W/4'/5K/KIT
	External Driver	2 Lamps + 1 Driver
Operating Voltage	35-45V	35-45V
Power Consumption	24W	24W
Lumens per Watt	100 Lm/W	100 Lm/W
Lumens	2400 Lm	2400 Lm
Color Temperature	5500K	5500K
Bulb Type	LED Tube	LED Tube
Replaces	T8/T12 4' Tubes	T8/T12 4' Tubes
Driver	N/A	N/A
CRI	<85	<85
Optics IP Rating	N/A	N/A
Fixture IP Rating	N/A	N/A
Power Factor	N/A	N/A
Dimmable	No	No
Beam Angle	N/A	N/A
Operating Temperature	N/A	N/A
Vibration Shock Resistant	N/A	N/A
Omni-Directional	Yes	Yes
Average Lamp Hours (Hrs)	50,000	50,000
Lamp Base	Bi-Pin	Bi-Pin
Construction	Plastic	Plastic
Dimensions	47.75" x 1.25"	47.75" x 1.25"
Weight	0.75 Lbs.	0.75 Lbs.
Warranty	5 Year Limited	5 Year Limited



Our T8 24 Watt LED tubes are designed to operate with external drivers to minimize heat related issues associated with internal driver LED tubes.



## LED T8 2 FT. TUBES

Applications: LED replacement lamp for 2 Ft. T8/T12 Florescent tubes. Removable internal driver.



SPECIFICATIONS:	LED/T8/9W/2'/35K	LED/T8/9W/2'/5K
Operating Voltage	120-277V	120-277V
Power Consumption	9W	9W
Lumens per Watt	105 Lm/W	115 Lm/W
Lumens	945 Lm	1035 Lm
Color Temperature	3500K	5000K
Bulb Type	LED Tube	LED Tube
Replaces	T8/T12 2' Tubes	T8/T12 2' Tubes
Driver	Internal Removal Driver	Internal Removal Driver
CRI	<85	<85
Optics IP Rating	N/A	N/A
Fixture IP Rating	IP20	IP20
Power Factor	<0.97	<0.97
Dimmable	No	No
Beam Angle	180°	180°
Operating Temperature	-20° / +40°C	-20° / +40°C
Vibration Shock Resistant	N/A	N/A
Omni-Directional	N/A	N/A
Average Lamp Hours (Hrs)	50,000	50,000
Lamp Base	Bi-Pin	Bi-Pin
Construction	Plastic	Plastic
Dimensions	23.75" x 1.25"	23.75" x 1.25"
Weight	0.45 Lbs.	0.45 Lbs.
Warranty	5 Year Limited	5 Year Limited

WITH REMOVABLE INTERNAL DRIVER







## LED T8 F48 TUBE HO

Applications: LED replacement for F48 T12 HO.

<b>SPECIFICATIONS:</b>	<b>LED/T8/F48/18W/5K/HO</b>
------------------------	-----------------------------

Operating Voltage	120-277V
Power Consumption	18W
Lumens per Watt	105 Lm/W
Lumens	1900 Lm
Color Temperature	5500K
Bulb Type	LED Tube
Replaces	F48 T12 HO
Driver	Internal Driver
CRI	<85
Optics IP Rating	N/A
Fixture IP Rating	N/A
Power Factor	N/A
Dimmable	No
Beam Angle	180°
Operating Temperature	N/A
Vibration Shock Resistant	N/A
Omni-Directional	N/A
Average Lamp Hours (Hrs)	50,000
Lamp Base	Bi-Pin HO
Construction	Plastic
Dimensions	46" x 1"
Weight	0.61 Lbs.
Warranty	5 Year Limited



## LED T8 8 FT. TUBE 1 PIN

Applications: LED replacement for lamp for F96 T8/T12 fluorescent tubes.

<b>SPECIFICATIONS:</b>	<b>LED/T8/40W/8'/5K/1P</b>
Operating Voltage	120-277V
Power Consumption	40W
Lumens per Watt	100 Lm/W
Lumens	4000 Lm
Color Temperature	5500K
Bulb Type	T8 LED Tube
Replaces	T8/T12 8' Tubes
Driver	Internal Driver
CRI	<80
Optics IP Rating	N/A
Fixture IP Rating	IP20
Power Factor	<0.97
Dimmable	No
Beam Angle	180°
Operating Temperature	-20°/+40°C
Vibration Shock Resistant	N/A
Omni-Directional	N/A
Average Lamp Hours (Hrs)	50,000
Lamp Base	Single Pin
Construction	Plastic
Dimensions	93.5" x 1"
Weight	0.75 Lbs.
Warranty	5 Year Limited







## LED T8 8 FT. TUBE HO

Applications: LED replacement for lamp for F96 T8/T12 HO.

### SPECIFICATIONS: LED/T8/40W/8'/5K/HO

Operating Voltage	120-277V
Power Consumption	40W
Lumens per Watt	100 Lm/W
Lumens	4000 Lm
Color Temperature	5500K
Bulb Type	LED Tube
Replaces	F96 T8/T12 HO
Driver	Internal Driver
CRI	<85
Optics IP Rating	N/A
Fixture IP Rating	N/A
Power Factor	N/A
Dimmable	No
Beam Angle	180°
Operating Temperature	N/A
Vibration Shock Resistant	N/A
Omni-Directional	N/A
Average Lamp Hours (Hrs)	50,000
Lamp Base	Bi Pin HO
Construction	Plastic
Dimensions	46" x 1"
Weight	0.61 Lbs.
Warranty	5 Year Limited



## LED T8 4 FT. MOTION SENSOR

Applications: LED replacement for T8 Fluorescent tubes with Motion Sensor for more energy savings.

**\*\*NOTE :EXTERNAL DRIVER REQUIRED** For better performance, longer life, stable light output and safety our LED tubes are design to operate with external drivers to minimize heat related issues associated with the internal drivers LED tubes.

<b>SPECIFICATIONS:</b>	<b>LED/T8/24W/4'/MOTION</b>
Operating Voltage	24V / DC
Power Consumption	24W
Lumens per Watt	100 Lm/W
Lumens	2400 Lm
Color Temperature	5000K
Bulb Type	T8 LED Tube w/ motion
Replaces	T12-T8 Fluorescent
Driver	External Driver required
CRI	<80
Optics IP Rating	N/A
Fixture IP Rating	IP20
Power Factor	N/A
Dimmable	No
Beam Angle	170°
Operating Temperature	-20° / +40°C
Vibration Shock Resistant	N/A
Omni-Directional	N/A
Average Lamp Hours (Hrs)	50,000
Lamp Base	Bi-Pin
Construction	Plastic
Dimensions	47.75" x 1.25"
Weight	0.75 Lbs.
Warranty	5 Year Limited

Application: LED tubes with Motion Sensor are a replacement lamp for T8/T12 Florescent tubes. After detecting no motion for 3 minutes, the motion sensor will activate and the power usage will drop to 20% or 4.8W. Motion sensor will activate when it detects motion within 10 feet, at which time it will return to full power of 24W.



## LED T5 F54 TUBE

Applications: LED replacement for T5 Fluorescent tubes.

<b>SPECIFICATIONS:</b>	<b>LED/T5/25W/5K</b>
Operating Voltage	120-277V
Power Consumption	25W
Lumens per Watt	100 Lm/W
Lumens	2500 Lm
Color Temperature	5000K
Bulb Type	T5 LED
Replaces	F54 T5
Driver	Internal Driver
CRI	<80
Optics IP Rating	N/A
Fixture IP Rating	IP20
Power Factor	<0.94
Dimmable	No
Beam Angle	110°
Operating Temperature	-30° / 70°C
Vibration Shock Resistant	N/A
Omni-Directional	N/A
Average Lamp Hours (Hrs)	50,000
Lamp Base	G5
Construction	Plastic
Dimensions	46" x 1.10"
Weight	0.65 Lbs.
Warranty	5 Years Limited



## LED T8 4 FT. & 8 FT. SIGN TUBES 180°

Applications: Designed specifically for 1 face commercial signs.



AVAILABLE IN:



BI-PIN



HO

SPECIFICATIONS:	LED/T8/S1/20W/4'/CW/UNV	LED/T8/S1/40W/8'/CW/UNV
Operating Voltage	120-277V	120-277V
Power Consumption	20W	40W
Lumens per Watt	110 Lm/W	110 Lm/W
Lumens	2200 Lm	4400 Lm
Color Temperature	6000K	6000K
Bulb Type	LED Tube	LED Tube
Replaces	T8/T12 Fluorescent	T8/T12 Fluorescent
Driver	Internal	Internal
CRI	<80	<80
Optics IP Rating	N/A	N/A
Fixture IP Rating	IP54	IP54
Power Factor	<0.97	<0.97
Dimmable	No	No
Beam Angle	180°	180°
Operating Temperature	N/A	N/A
Vibration Shock Resistant	N/A	N/A
Omni-Directional	N/A	N/A
Average Lamp Hours (Hrs)	50,000	50,000
Lamp Base	Bi-Pin / HO	Bi-Pin / HO
Construction	Plastic	Plastic
Dimensions	48" x 1"	96" x 1"
Weight	0.91 Lbs.	1.5 Lbs.
Warranty	5 Year Limited	5 Year Limited





## LED T8 4, 6 & 8 FT. SIGN TUBES 360°

Applications: Designed specifically for sign industry, 1 or 2 face commercial signs.



### SPECIFICATIONS:

	LED/T8/S2/24W/4'/CW/UNV	LED/T8/S2/40W/6'/CW	LED/T8/S2/48W/8'/CW
Operating Voltage	120-277V	120-277V	120-277V
Power Consumption	24W	40W	48W
Lumens per Watt	110 Lm/W	110 Lm/W	110 Lm/W
Lumens	2600 Lm	4400 Lm	5200 Lm
Color Temperature	6000K	6000K	6000K
Bulb Type	LED Tube	LED Tube	LED Tube
Replaces	T8/T12 Fluorescent	T8/T12 Fluorescent	T8/T12 Fluorescent
Driver	Internal UL Driver	Internal UL Driver	Internal UL Driver
CRI	<80	<80	<80
Optics IP Rating	N/A	N/A	N/A
Fixture IP Rating	IP54	IP54	IP54
Power Factor	<0.97	<0.97	<0.97
Dimmable	No	No	No
Beam Angle	360°	360°	360°
Operating Temperature	N/A	N/A	N/A
Vibration Shock Resistant	N/A	N/A	N/A
Omni-Directional	N/A	N/A	N/A
Average Lamp Hours (Hrs)	50,000	50,000	50,000
Lamp Base	Bi-Pin / HO	Bi-Pin / HO	Bi-Pin / HO
Construction	Plastic	Plastic	Plastic
Dimensions	48" x 1"	69.5" x 1"	96" x 1"
Weight	0.80 Lbs.	1 Lbs.	1.5 Lbs.
Warranty	5 Year Limited	5 Year Limited	5 Year Limited

AVAILABLE IN:



BI-PIN HO

## LED TUBE 5 FT. COOLER / FREEZER

Applications: T8 LED tubes designed for industrial and commercial coolers and freezer doors.



SPECIFICATIONS:	LED/T8/24W/5'/FRIDGE
Operating Voltage	24V / DC
Power Consumption	24W
Lumens per Watt	100 Lm/W
Lumens	2400 Lm
Color Temperature	5000K
Bulb Type	SMD LED
Replaces	F64 HO Fluorescent
Driver	External CV 24V/DC
CRI	<80
Optics IP Rating	N/A
Fixture IP Rating	IP65
Power Factor	<0.95
Dimmable	No
Beam Angle	180°
Operating Temperature	-30° / +50°C
Vibration Shock Resistant	N/A
Omni-Directional	N/A
Average Lamp Hours (Hrs)	30,000
Lamp Base	N/A
Construction	Plastic
Dimensions	60" x 1.25"
Weight	1 Lb.
Warranty	5 Year Limited

### Features:

- Easy installation for most cooler system (Retrofit)
- Wiring and mounting kits are included
- Low profile design
- You can mount tubes in between old socket fixtures (tombstones)
- Keyed wire harness plug and play
- No need of lamp holders
- Sizes available: 5 Feet







## LED A10

Applications: Ideal for general lighting use, commercial or residential use. Replaces 15-23W CF lamps or up to 80W incandescent bulbs. Frosted.

<b>SPECIFICATIONS:</b>	<b>LED/A10/6.8FR/33K</b>	<b>LED/A10/6.8FR/55K</b>
Operating Voltage	120V	120V
Power Consumption	6.8W	6.8W
Lumens per Watt	90 Lm/W	102 Lm/W
Lumens	610 Lm	700 Lm
Color Temperature	3300K	5500K
Bulb Type	LED A10	LED A10
Replaces	60W Incandescent	60W Incandescent
Driver	N/A	N/A
CRI	<75	<75
Optics IP Rating	N/A	N/A
Fixture IP Rating	IP20	IP20
Power Factor	<0.96	<0.96
Dimmable	No	No
Beam Angle	360°	360°
Operating Temperature	-20° / +40°C	-20° / +40°C
Vibration Shock Resistant	N/A	N/A
Omni-Directional	Yes	Yes
Average Lamp Hours (Hrs)	50,000	50,000
Lamp Base	E26	E26
Construction	N/A	N/A
Dimensions	4.25" x 1.5"	4.25" x 1.5"
Weight	0.18 Lbs.	0.18 Lbs.
Warranty	5 Year Limited	5 Year Limited



# LED A19

Frosted, Direct replacement for any A19 general lighting incandescent lamp or CFL.  
Replaces 75W incandescent lamp or 15-23W CFL.

<b>SPECIFICATIONS:</b>	<b>LED/A19/9FR/3K/DIM</b>
Operating Voltage	110-130V
Power Consumption	9W
Lumens per Watt	96 Lm/W
Lumens	865 Lm
Color Temperature	3000K
Bulb Type	LED A19
Replaces	15-20W CFL
Driver	N/A
CRI	<80
Optics IP Rating	N/A
Fixture IP Rating	IP20
Power Factor	<0.96
Dimmable	Yes
Beam Angle	360°
Operating Temperature	-20°/+40°C
Vibration Shock Resistant	N/A
Omni-Directional	Yes
Average Lamp Hours (Hrs)	30,000
Lamp Base	E26
Construction	Glass
Dimensions	4.5" x 2.25"
Weight	0.18 Lbs.
Warranty	5 Year Limited







## LED TORPEDO

Application: Great replacement for incandescent chandelier lamps, sconces and decorative venues.

<b>SPECIFICATIONS:</b>	<b>LED/TORP/3CL/E12/3K</b>	<b>LED/TORP/5CL/E12/3K/DIM</b>
Operating Voltage	120-240V	120-240V
Power Consumption	3W	5W
Lumens per Watt	70 Lm/W	84 Lm/W
Lumens	210 Lm	420 Lm
Color Temperature	3000K	3000K
Bulb Type	Torpedo	Torpedo
Replaces	Incandescent Lamps	Incandescent Lamps
Driver	N/A	N/A
CRI	<80	<80
Optics IP Rating	N/A	N/A
Fixture IP Rating	IP20	IP20
Power Factor	<0.96	<0.97
Dimmable	No	Yes
Beam Angle	N/A	N/A
Operating Temperature	-20°/40°C	-20°/40°C
Vibration Shock Resistant	N/A	N/A
Omni-Directional	Yes	Yes
Average Lamp Hours (Hrs)	30,000	30,000
Lamp Base	E12	E12
Construction	Glass	Glass
Dimensions	4.5" x 1.5"	4.75" x 1.5"
Weight	0.06 Lbs.	0.06 Lbs.
Warranty	5 Year Limited	5 Year Limited



LED/TORP/3CL/E12/3K



LED/TORP/5CL/E12/DIM





## LED MR16

Applications: Great replacement for incandescent MR16 Lamps, decorative venues, pendant lights & track lighting.

### SPECIFICATIONS:

### LED/MR16/6W/GU5.3/3K

Operating Voltage	12V AC/DC
Power Consumption	6W
Lumens per Watt	67 Lm/W
Lumens	400 Lm
Color Temperature	3000K
Bulb Type	LED MR16
Replaces	BAB/FMW/EXN
Driver	N/A
CRI	<80
Optics IP Rating	N/A
Fixture IP Rating	IP20
Power Factor	<0.97
Dimmable	No
Beam Angle	35
Operating Temperature	-20/+40C
Vibration Shock Resistant	N/A
Omni-Directional	N/A
Average Lamp Hours (Hrs)	30,000
Lamp Base	GU5.3
Construction	Glass
Dimensions	2" x 2"
Weight	0.08 Lbs.
Warranty	5 Year Limited





## LED PAR LAMPS

Application: General Area Lighting, Building Perimeter Lighting, Security Lighting, Wall Packs, and much more.

<b>SPECIFICATIONS:</b>	<b>LED/PAR30/10W/30K/FL/UL</b>	<b>LED/PAR38/14W/30K/FL/UL</b>
Operating Voltage	120V	120V
Power Consumption	10W	14W
Lumens per Watt	80 Lm/W	80 Lm/W
Lumens	800 Lm	1100 Lm
Color Temperature	3000K	3000K
Bulb Type	PAR30	PAR38
Replaces	65W	100W
Driver	Dimmable Driver	Dimmable Driver
CRI	<80	<80
Optics IP Rating	IP60	IP60
Fixture IP Rating	IP60	IP60
Power Factor	<0.90	<0.90
Dimmable	Yes	Yes
Beam Angle	35°	45°
Operating Temperature	-20°/40°C	-25°/40°C
Vibration Shock Resistant	N/A	N/A
Omni-Directional	No	No
Average Lamp Hours (Hrs)	25,000	25,000
Lamp Base	E26	E26
Construction	Glass	Glass
Dimensions	3.75" x 4.75"	4.80" x 5.30"
Weight	0.55 Lbs.	1.29 Lbs.
Warranty	5 Year Limited	5 Year Limited



## LED LOW POWER COBS E26

Applications: Indoor use only, Wall Sconces, Ceiling Recessed Lights or any other application that uses plug in compact fluorescent lamps E26 base.



SPECIFICATIONS:	LED7COB/E26/WW/360/UNV	LED8COB/E26/WW/180/UNV	LED9COB/E26/WW/360/UNV	LED13COB/E26/CW/360/UNV	LED13COB/E26/WW/360/UNV
Operating Voltage	120-277V	120-277V	120-277V	100-277V	100-277V
Power Consumption	7W	8W	9W	13W	13W
Lumens per Watt	92 Lm/W	90 Lm/W	87 Lm/W	95 Lm/W	90 Lm/W
Lumens	644 Lm	750 Lm	780 Lm	1235 Lm	1170 Lm
Color Temperature	2700-3300K	3500K	2700-3300K	5500K	2700-3300K
Bulb Type	COB LED	COB LED	COB LED	COB LED	COB LED
Replaces	HPS/MH 50-75W	26W CFL (Aprox.)	HPS/MH 50-100W	HPS/MH/INC 75-100W	HPS/MH/INC 75-150W
Driver	N/A	N/A	N/A	N/A	N/A
CRI	<80	<80	<80	<80	<80
Optics IP Rating	N/A	N/A	N/A	N/A	N/A
Fixture IP Rating	IP20	IP20	IP20	IP20	IP20
Power Factor	<0.97	<0.97	<0.97	<0.97	<0.97
Dimmable	No	No	No	No	No
Beam Angle	360°	180°	360°	360°	360°
Operating Temperature	-20° / +40°C	-20° / +40°C	-20° / +40°C	N/A	-20° / +40°C
Vibration Shock Resistant	N/A	N/A	N/A	N/A	N/A
Omni-Directional	No	No	No	Yes	Yes
Average Lamp Hours (Hrs)	30,000	30,000	30,000	30,000	30,000
Lamp Base	E26	E26	E26	E26	E26
Construction	N/A	N/A	N/A	N/A	N/A
Dimensions	7.5" x 1.5"	7.5" x 1.5"	7.25" x 1.5"	6.75" x 1.75"	6.75" x 1.75"
Weight	.31 Lbs.	.36 Lbs.	.31 Lbs.	.56 Lbs.	.56 Lbs.
Warranty	5 Year Limited	5 Year Limited	5 Year Limited	5 Year Limited	5 Year Limited





## LED LOW POWER COBS PL4

Applications: Indoor use only, Wall Sconces, Ceiling Recess Lights or any other application that uses plug in compact fluorescent lamps.



SPECIFICATIONS:	LED5COB/PL4/WW/360/UNV	LED7COB/PL4/WW/180/UNV	LED8COB/PL4/WW/180/UNV	LED9COB/PL4/WW/360/UNV
Operating Voltage	120-277V	120-277V	120-277V	120-277V
Power Consumption	5W	7W	8W	9W
Lumens per Watt	85 Lm/W	92 Lm/W	92 Lm/W	86 Lm/W
Lumens	425 Lm	644 Lm	736 Lm	780 Lm
Color Temperature	2700-3300K	2700-3300K	2700-3300K	2700-3000K
Bulb Type	COB LED	COB LED	COB LED	COB LED
Replaces	PL13	26W CFL (Aprox.)	26W CFL (Aprox)	PL32 to 42W CFI (Aprox.)
Driver	N/A	N/A	N/A	N/A
CRI	<80	<80	<80	<80
Optics IP Rating	N/A	N/A	N/A	N/A
Fixture IP Rating	IP20	IP20	IP20	IP20
Power Factor	<0.97	<0.97	<0.97	<0.97
Dimmable	No	No	No	No
Beam Angle	360°	180°	180°	360°
Operating Temperature	-20° / +40°C	-20° / +40°C	-20° / +40°C	-20° / +40°C
Vibration Shock Resistant	N/A	N/A	N/A	N/A
Omni-Directional	No	No	No	No
Average Lamp Hours (Hrs)	30,000	30,000	30,000	30,000
Lamp Base	G24Q	G24Q	G24Q	G24Q
Construction	N/A	N/A	N/A	N/A
Dimensions	4.75" x 1.5"	7.5" x 1.5"	7.5" x 1.5"	6.75" x 1.25"
Weight	.218 Lbs.	.37 Lbs.	.37 Lbs.	.37 Lbs.
Warranty	5 Years Limited	5 Years Limited	5 Years Limited	5 Years Limited

# LED HIGH POWER COBS

## 20 WATTS, 30 WATTS

Applications: Widely used in supermarkets, warehouses, garages, homes, hotels, hospitals, schools, etc.



SPECIFICATIONS:	LED20COB/UL/E26/6K/UNV	LED30COB/UL/E26/6K/UNV
Operating Voltage	100-305V	100-305V
Power Consumption	20W	30W
Lumens per Watt	99 Lm/W	N/A
Lumens	2000 Lm	2800 Lm
Color Temperature	6000K	6000K
Bulb Type	COB LED	COB LED
Replaces	HPS/MH 150	HPS/MH 200
Driver	N/A	N/A
CRI	<75	<75
Optics IP Rating	N/A	N/A
Fixture IP Rating	N/A	N/A
Power Factor	<0.92	<0.95
Dimmable	No	No
Beam Angle	N/A	N/A
Operating Temperature	-20° F (60°C)	-30° F (70°C)
Vibration Shock Resistant	N/A	N/A
Omni-Directional	N/A	N/A
Average Lamp Hours (Hrs)	50,000	50,000
Lamp Base	E26	E26
Construction	Plastic / Aluminum	Plastic Aluminum
Dimensions	5.75" x 2.75"	8.5" x 3.5"
Weight	.33 Lbs.	.80 Lbs.
Warranty	5 Years Limited	5 Years Limited







# LED HIGH POWER COBS

## 40 WATTS, 60 WATTS

Applications: For indoor use applications, supermarkets, warehouses, parking garages, office buildings, hotels, hospitals, schools, etc.



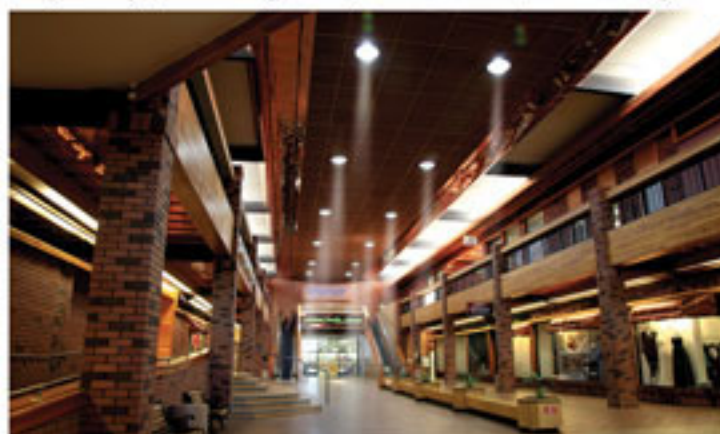
SPECIFICATIONS:	LED40COB/UL/E26/6K/UNV	LED60COB/UL/E39/6K/UNV
Operating Voltage	100-305V	100-305V
Power Consumption	40W	60W
Lumens per Watt	100 Lm/W	N/A
Lumens	4500 Lm	7200 Lm
Color Temperature	6000K	6000K
Bulb Type	COB LED	COB LED
Replaces	HPS/MH 250	HPS/MH 250
Driver	N/A	N/A
CRI	<75	<75
Optics IP Rating	N/A	N/A
Fixture IP Rating	N/A	IP61
Power Factor	<0.95	<0.99
Dimmable	No	No
Beam Angle	N/A	N/A
Operating Temperature	-30° F (70°C)	-30° F (70°C)
Vibration Shock Resistant	N/A	N/A
Omni-Directional	N/A	N/A
Average Lamp Hours (Hrs)	50,000	50,000
Lamp Base	E26	E39
Construction	Plastic / Aluminum	Plastic / Aluminum
Dimensions	10" x 3.5"	9.5" x 3.5"
Weight	.80 Lbs.	.88 Lbs.
Warranty	5 Years	5 Years



# LED HIGH POWER COBS

## 80 WATTS, 100 WATTS

Applications: LED 80 Watt COB retrofit lamp for High Bays, Parking Lots, Wall Packs, E39 Mogul Base.



### SPECIFICATIONS:

	LED80COB/UL/E39/6K/UNV	LED100COB/UL/E39/6K/UNV
Operating Voltage	100-305V	100-305V
Power Consumption	80W	100W
Lumens per Watt	113 Lm/W	112 Lm/W
Lumens	9200 Lm	11300 Lm
Color Temperature	6000K	6000K
Bulb Type	COB LED	COB LED
Replaces	HPS/MH 400	HPS/MH 400-1000
Driver	N/A	N/A
CRI	<75	<75
Optics IP Rating	N/A	N/A
Fixture IP Rating	IP61	IP61
Power Factor	<0.971	<0.971
Dimmable	No	No
Beam Angle	N/A	N/A
Operating Temperature	-30° F (70°C)	-30° F (70°C)
Vibration Shock Resistant	N/A	N/A
Omni-Directional	N/A	N/A
Average Lamp Hours (Hrs)	50,000	50,000
Lamp Base	E39	E39
Construction	Plastic / Aluminum	Plastic / Aluminum
Dimensions	11.25" x 3.5"	10.24" x 4"
Weight	1.5 Lbs.	1.0 Lbs.
Warranty	5 Years Limited	5 Years Limited



## LED COB PADDLE

Applications: Great for Wall Packs , Streets, Parking lots, Courtyards and Sidewalk lighting. Recommended height from the ground: 10-15 Ft.

### SPECIFICATIONS: LED40PADDLE/UL/E39/6K/UNV

Operating Voltage	100-277V
Power Consumption	40W
Lumens per Watt	85 Lm/W
Lumens	2500 Lm
Color Temperature	6000K
Bulb Type	COB LED
Replaces	HPS/MH 175
Driver	N/A
CRI	<70
Optics IP Rating	IP50
Fixture IP Rating	IP50
Power Factor	<0.92
Dimmable	No
Beam Angle	180°
Operating Temperature	-20° / +60° C
Vibration Shock Resistant	No
Omni-Directional	No
Average Lamp Hours (Hrs)	50,000
Lamp Base	E39
Construction	Aluminum / Plastic
Dimensions	10.75" x 3.7"
Weight	2 Lbs.
Warranty	5 Years Limited



E39 Lamp Base



## UNIVERSAL LED RETROFIT KITS

Applications: Universal LED Retrofit Kit - 100W & 120W UL Certified. Direct replacement for Metal Halide or High Pressure Sodium lamps. Includes External Driver. Great for Parking lots, Shoeboxes, Street Lights, Flood Lights, Wall Packs, High Bays and Canopies

### SPECIFICATIONS:

	LED100/RETRO KIT/6K/UNV/UL	LED120/RETRO KIT/6K/UNV/UL
Operating Voltage	120-305V	100-305V
Power Consumption	100W	120W
Lumens per Watt	130 Lm/W	125 Lm/W
Lumens	13000 Lm	15000 Lm
Color Temperature	6000K	6000K
Bulb Type	CREE LED	CREE LED
Replaces	HPS/MH 400	HPS/MH 400
Driver	External Driver	External Driver
CRI	<75	<75
Optics IP Rating	N/A	N/A
Fixture IP Rating	IP61	IP61
Power Factor	<0.97	<0.979
Dimmable	No	No
Beam Angle	N/A	N/A
Operating Temperature	-30° F / 70°C	-30° F / 70°C
Vibration Shock Resistant	N/A	N/A
Omni-Directional	N/A	N/A
Average Lamp Hours (Hrs)	50,000	50,000
Lamp Base	Hard Wire	Hard Wire
Construction	Aluminum	Aluminum
Dimensions	11.25" x 6.25" x 2.75"	11.25" x 6.25" x 2.75"
Weight	1.5 Lbs.	1.5 Lbs.
Warranty	5 Years Limited	5 Years Limited





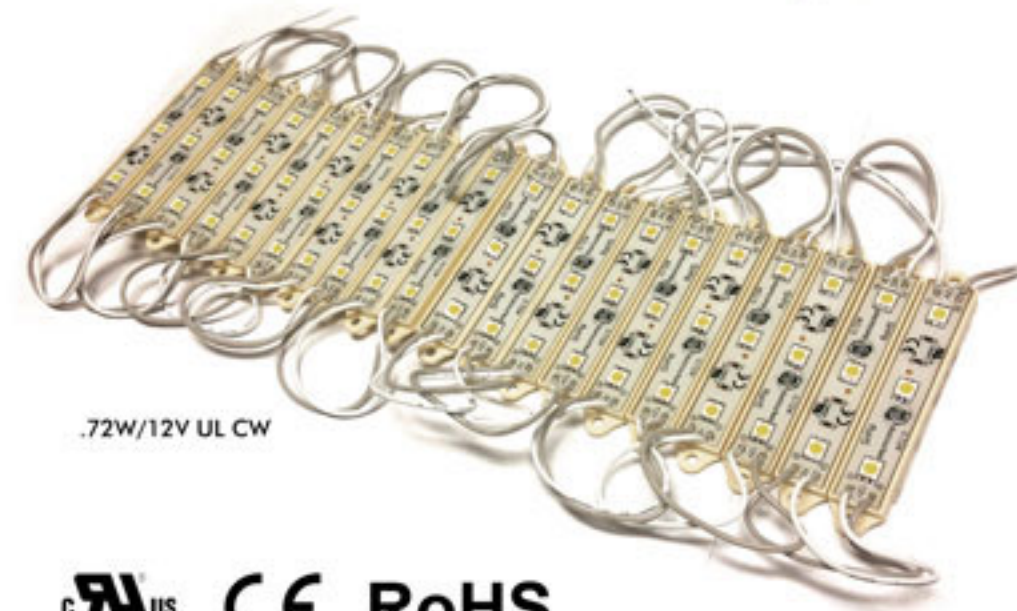
# LED SIGN MODULES

Applications: Signages, Channel Letters, Under Cabinet lighting, Car or Truck lighting detailing,  
1 pack / 100 pieces, UL Approved. Requires Constant Voltage LED Driver.

SPECIFICATIONS:	LED/MOD.48/CW/12V/CV/UL	LED/MOD.72/CW/12V/CV/UL
Operating Voltage	DC12V	DC12V
Power Consumption	0.89W	0.72W
Lumens per Watt	N/A	8 Lm/W
Lumens	43 Lm	63 Lm
Color Temperature	6000K	6000K
Bulb Type	COB LED	COB LED
LED Quantity	3 pcs.	3 pcs.
Driver	N/A	N/A
CRI	<70	<70
Optics IP Rating	IP65	IP65
Fixture IP Rating	IP65	IP65
Power Factor	<0.96	<0.96
Dimmable	No	No
Beam Angle	120°	120°
Operating Temperature	-30° / +60°C	-30° / +60°C
Vibration Shock Resistant	Yes	Yes
Omni-Directional	N/A	N/A
Average Lamp Hours (Hrs)	50,000	50,000
Adhesive Fixed	3M Double Sided	3M Double Sided
Interface Definition	AWG 20# Grey-Positive (+), White - Negative (-)	
Construction	Plastic	Plastic
Dimensions	2.25" x .5" x .25"	3.5" x 5/16" x .25"
Weight	1.4 Lbs. per 100 pcs.	2 Lbs. per 100 pcs.
Warranty	3 Years	3 Years



.48W/12V UL CW



.72W/12V UL CW



LED SINGLE COLOR DIMMER  
(Sold Separately)

ONLY DIMMABLE WITH A DEDICATED  
MODULE DIMMER



**KLS-USA**

P.O. Box 51299  
Sparks, NV 89435  
Tel.: 775-636-6565  
Email: sales@kls-usa.com

**AUTHORIZED DEALER:**



**[www.kls-usa.com](http://www.kls-usa.com)**

© Copyright, KLS LED Solutions. All Rights Reserved.